



CLEMCO
The Performance
System

TECHNICAL DATA SHEET

Note: For safe, efficient blasting, read and follow the owner's manual and seek training for everyone who will use this equipment.

Purpose

The Apollo 20 HP is designed for use with compressed air systems. It meets OSHA standards for respiratory protection and noise limitations. The Apollo 20's full-helmet design and heavy-duty cape protect the blast operator's head, neck, shoulders, and chest from rebounding abrasive.

Requirements for Operation

The following items are required or recommended for operation, but are not included with this respirator:

- Source of Grade D (or better quality) breathing air providing 7 to 15 cfm at 65 to 100 psi (if Clem-Cool or CCT is used, increase cfm to 20)
- A breathing air filter (such as the Clemco CPF) to remove oil, moisture, particles, and odors
- Carbon monoxide monitor and alarm (such as the Clemco CMS-2)
- 3/8-inch x 50-foot approved respirator hose from the breathing air filter to the helmet connection, stock no. 04415
- Protective clothing, gloves, and shoes suitable for a heavy construction site
- Primary hearing and eye protection

Description of Operation

The Apollo 20 is a single-shell construction helmet supported by an adjustable suspension. The DLX comfort-fit suspension surrounds the operator's head with comfortable padding. A chin strap holds the helmet firmly in place. The rectangular window provides a clear field of view. An inner fixed lens and one middle lens seal out dust and abrasive.

Up to three lightweight, disposable outer lenses, held in place by a hinged frame, protect the middle lens from pitting. As the outermost disposable lens becomes pitted, it can be torn off to expose the next lens.

Description

The Apollo 20 HP is a Type CE, continuous-flow, supplied-air respirator for abrasive blasting, to be used with a compressed air source. The bright green helmet has a box-front window, and a protective cape. The Apollo 20 comes standard with DLX comfort-fit suspension.



The helmet can be purchased with one of the following:

- Constant-Flow Connector — fixed air flow (no adjustment possible)
- Air Control Valve — to adjust flow rate of incoming air
- Clem-Cool Air Conditioner — to cool incoming air
- Climate Control Tube — to cool or warm incoming air as needed

With all but the Constant-Flow Connector, the operator can adjust the flow of air. None of the valves can be adjusted beyond pre-set minimum and maximum settings specified by NIOSH.

A flexible breathing tube between the valve and the helmet allows free movement of the operator's head. This tube contains specially-formulated sound-deadening materials that help the respirator comply with 80 dBA maximum noise level while allowing free air flow. For maximum protection while blasting, the operator should wear ear plugs or other suitable hearing protection and safety glasses or goggles.

The air enters the helmet at the rear, travels through a sound-attenuating

Apollo 20 HP Supplied-Air Respirator

For use with
compressed air supply

distribution system at the top, and circulates about the operator's face. The incoming air maintains positive pressure inside the helmet, so exhaled air exits via the knit collar. Maintaining positive pressure inside the helmet helps keep out potentially harmful dust and abrasive.

Advantages

- DLX comfort-fit suspension
- Box-front window features economical replacement lenses
- Sound-attenuating, air-distribution channel
- Lightweight construction
- Molded-in carrying handle
- Allows operator to wear supplementary hearing and primary eye protection

Approvals and Certifications

The Apollo 20 HP helmet is a NIOSH-approved, type CE respirator (approval number TC-19C-338) and is recognized by OSHA as having an assigned protection factor (APF) against lead dust of 1000 times the permissible exposure limit (PEL).

NOTE: Prior to use, ensure that the Apollo, type CE, supplied-air respirator is appropriate for your specific blasting conditions and requirements.

Respirator Systems and Accessories

NOTE: The respirators listed DO NOT include respirator hose.

Respirator hose must be ordered separately.

(-) Apollo 20 HP DLX w/Constant-Flow Connector	20975
(-) Apollo 20 HP DLX w/Air Control Valve	21419
(-) Apollo 20 HP DLX w/Clem-Cool Air Conditioner	21420
(-) Apollo 20 HP DLX w/Climate Control Tube	21421
(-) Constant-Flow Connector with belt	21422
(-) Air Control Valve with belt	04440
(-) Clem-Cool Air Conditioner with belt	23825
(-) Cool-Air Tube with belt	04410
(-) Climate Control Tube with belt	04411
(-) Low pressure conversion kit. Converts HP helmet to LP helmet	22680
(-) DLX Suspension Kit (for replacement or conversion to DLX style)	25215

Options and Accessories

Description	Stock No.
CPF-20 Air Filter (for one or two operators)	03578
CPF-80 Air Filter (for up to four operators)	03527
Carbon monoxide alarm, CMS-2	22894
Heavy-duty blast suit (leather front, cotton back)	
S M L XL XXL XXXL	
08920 08921 08922 08923 24201 24202	
Light-weight seasonal blast suit (nylon front, cotton back)	
S M L XL XXL XXXL	
22913 22914 22915 22916 22917 25022	
Leather gloves	02243
Comfort Vest with Clem-Cool	25266

Packaging

Respirators

Stock No.	Dimensions	Weight
20975	14-1/2" x 13" x 15"	8 lb
21419	(same)	8 lb
21420	(same)	8.9 lb
21421	(same)	9.4 lb

Respirator Hose (in poly bag)

Stock No.	Dimensions	Weight
04397 (25 ft)	10" x 10" x 3"	2.8 lb
04415 (50 ft)	12" x 12" x 5"	5.8 lb
04398 (100 ft)	14" x 14" x 5"	11.6 lb

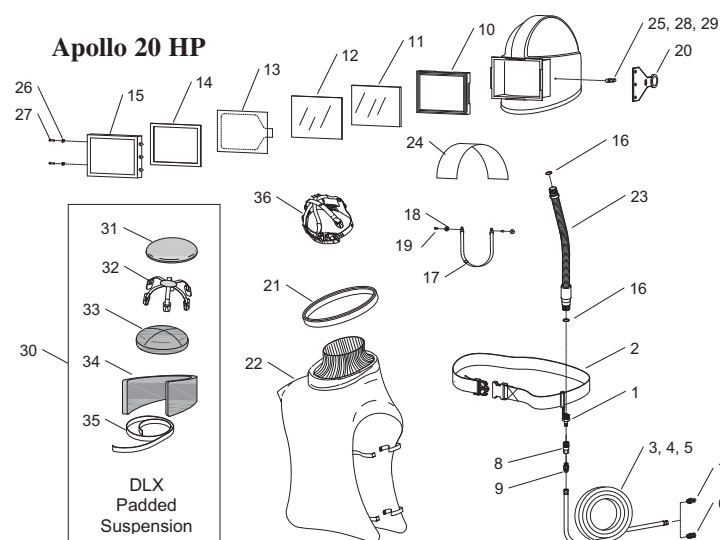
Authorized Distributor:

PHILEXPERT INC.

9999 Parkway, Anjou, Québec, H1J 1P7
Tél.: (514) 351-1620 . Téléc. (514) 351-1270.
Courriel : philexpert@qc.aira.com

Replacement Parts

Item	Description	Stock No.
1.	Constant-flow connector, HP, (alternate), does not include belt	21415
2.	Belt, 2" web with buckle	04430
3.	Respirator hose, 3/8" x 25 ft. (alternate), includes items 6 and 7	04397
4.	Respirator hose, 3/8" X 50 ft. (alternate), includes Items 6 and 7	04415
5.	Respirator hose, 3/8" x 100 ft. (alternate), includes items 6 and 7	04398
6.	Adapter, 3/8" hose to 3/8" pipe	00022
7.	Union, 3/8" hose to 3/8" hose	01020
8.	Disconnect, 1/4" female	00025
9.	Adapter, 3/8" hose to 1/4" pipe	01019
10.	Gasket, molded window	99996
11.	Inner lens, 4-5/8" x 6-5/8" nom., .125" package of 5	21409
12.	Middle lens, 5" x 7" nom., .094" package of 5	21410
13.	Cover lens, perforated, .0075" package of 25	21411
14.	Gasket, lens frame	21041
15.	Lens frame	20976
16.	O-Ring, 7/8" OD, 2 required	22815
17.	Chin Strap	04460
18.	Chin strap holder, 2 required	21696
19.	Screw, 8-32 x 1/2" ph hd, 2 required	21119
20.	Latch, lens frame, rubber	21298
21.	Cape attachment strap	10534
22.	Cape with inner collar	21301
23.	Breathing tube assembly includes two of item 16	22811
24.	Partition, air baffle	21118
25.	Button, latch	21040
26.	Nut, lens frame	90041
27.	Screw, lens frame	90295
28.	Screw, 8-32 x 1/2" sm	21402
29.	Screw, 8-32 x 1" sm	21403
30.	DLX padded suspension kit includes items 31 thru 35	25215
31.	Pad, top	25216
32.	Suspension web	25219
33.	Pad, middle	25182
34.	Pad, side	25218
35.	Hook-fastener tape, 1" adhesive backed, 2-ft. used, specify feet required	25185
36.	Web suspension w/sweatband (alternate)	10532
	Apollo 20 HP Owner's Manual	21990



ISO 9001:2000 certified. Clemco is committed to continuous product improvement. Specifications are subject to change without notice.

© 2009 Clemco Industries Corp. • One Cable Car Drive • Washington, MO 63090 • Phone (636) 239-4300 • Fax (800) 726-7559

Stock No. 21959

www.clemcoindustries.com

Job No. 1195-1295 • Rev. D: 04/09